

Client: Original Peptide
info@originalpeptide.com
www.originalpeptide.com

Sample received: **12/23/25**
Analysis conducted: **01/06/26**

Compound:	Epithalon (Epitalon) 10mg	CAS:	307297-39-8
Batch/Lot #:	T2507-008	Formula:	C14H22N4O9
Appearance:	White lyophilized powder	Mol Wt:	390.349 g/mol

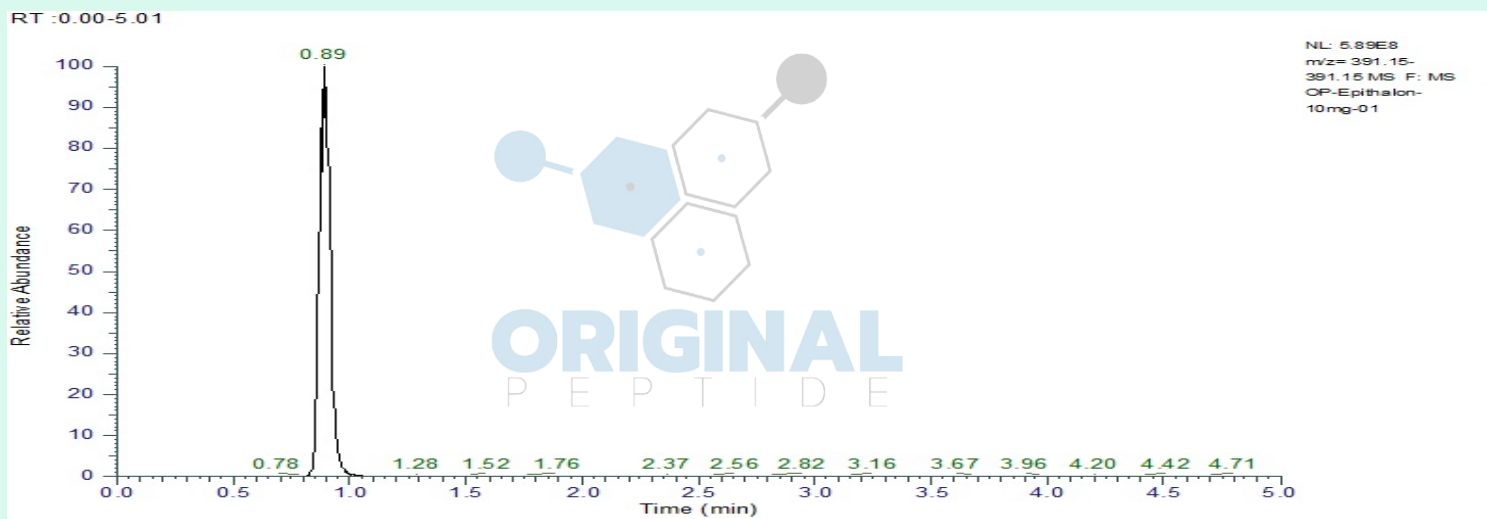
Method: Qualitative and Quantitative chemical analysis by Ultra High Performance Liquid Chromatography with Mass Spectrometry

Pubchem CID: 219042

[Epithalon |C14H22N4O9 |219042](#)

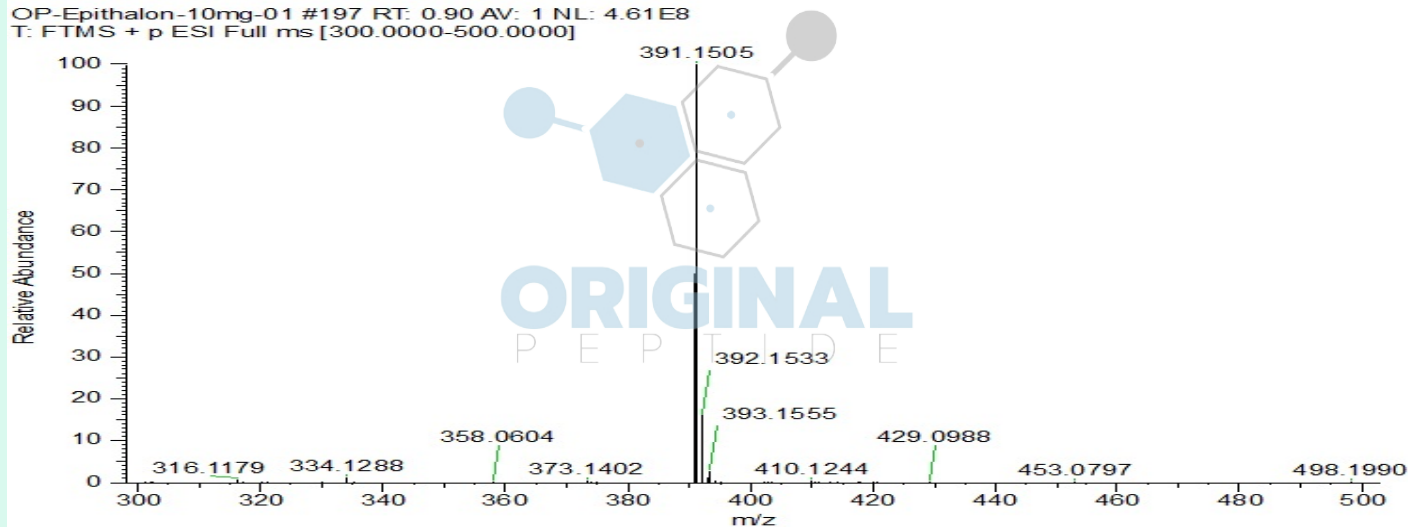
	Specification	Result	
Identity Test:	Epithalon	Epithalon	Conforms
Purity:	>99%	99.42%	Conforms

LC-MS Chromatogram: Retention Time and Peak Analysis



Full Scan Mass Spectrometry Analysis

OP-Epithalon-10mg-01 #197 RT: 0.90 AV: 1 NL: 4.61E8
T: FTMS + p ESI Full ms [300.0000-500.0000]



Analysis Performed by

Victor Ugur
Analytical Chemist
contact@bioregen.com

COA #11766
Security Key **ORIGINALPEPTIDE0**
bioregen.com/verify



Victor Ugur