

**Client: Original Peptide**  
info@originalpeptide.com  
www.originalpeptide.com

Sample received: **12/23/25**  
Analysis conducted: **01/07/26**

Compound:	Tesamorelin 10mg	CAS:	218949-48-5
Batch/Lot #:	T2506-022	Formula:	C221H366N72O67S
Appearance:	White lyophilized powder	Mol Wt:	5135.89 g/mol

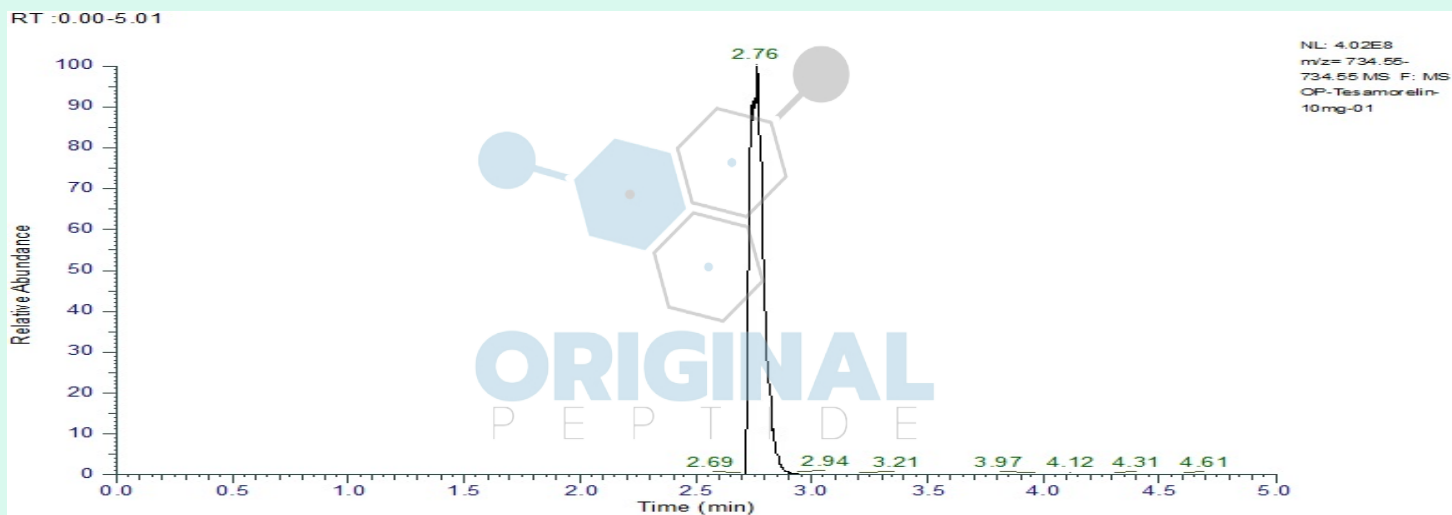
**Method:** Qualitative and Quantitative chemical analysis by Ultra High Performance Liquid Chromatography with Mass Spectrometry

**Pubchem CID:** 16137828

Tesamorelin |C221H366N72O67S |16137828

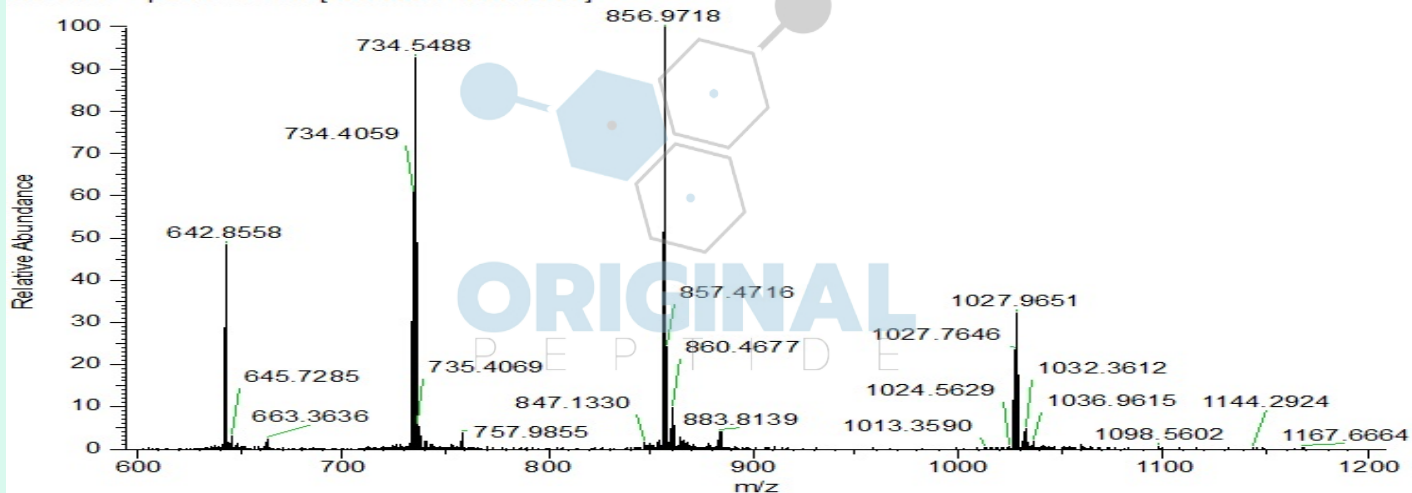
	Specification	Result	
Identity Test:	Tesamorelin	<b>Tesamorelin</b>	<b>Conforms</b>
Purity:	>99%	<b>99.31%</b>	<b>Conforms</b>

### LC-MS Chromatogram: Retention Time and Peak Analysis



# Full Scan Mass Spectrometry Analysis

OP-Tesamorelin-10mg-01 #574 RT: 2.74 AV: 1 NL: 3.94E8  
T: FTMS + p ESI Full ms [600.0000-1200.0000]



## Analysis Performed by

Victor Ugur  
Analytical Chemist  
contact@bioregen.com

COA #11796  
Security Key **ORIGINALPEPTIDE0**  
bioregen.com/verify



*Victor Ugur*