

Client: Original Peptide
info@originalpeptide.com
www.originalpeptide.com

Sample received: **12/23/25**
Analysis conducted: **01/07/26**

Compound:	BPC-157	CAS:	137525-51-0
Batch/Lot #:	T2506-001	Formula:	C62H98N16O22
Appearance:	White lyophilized powder	Mol Wt:	1419.556 g/mol

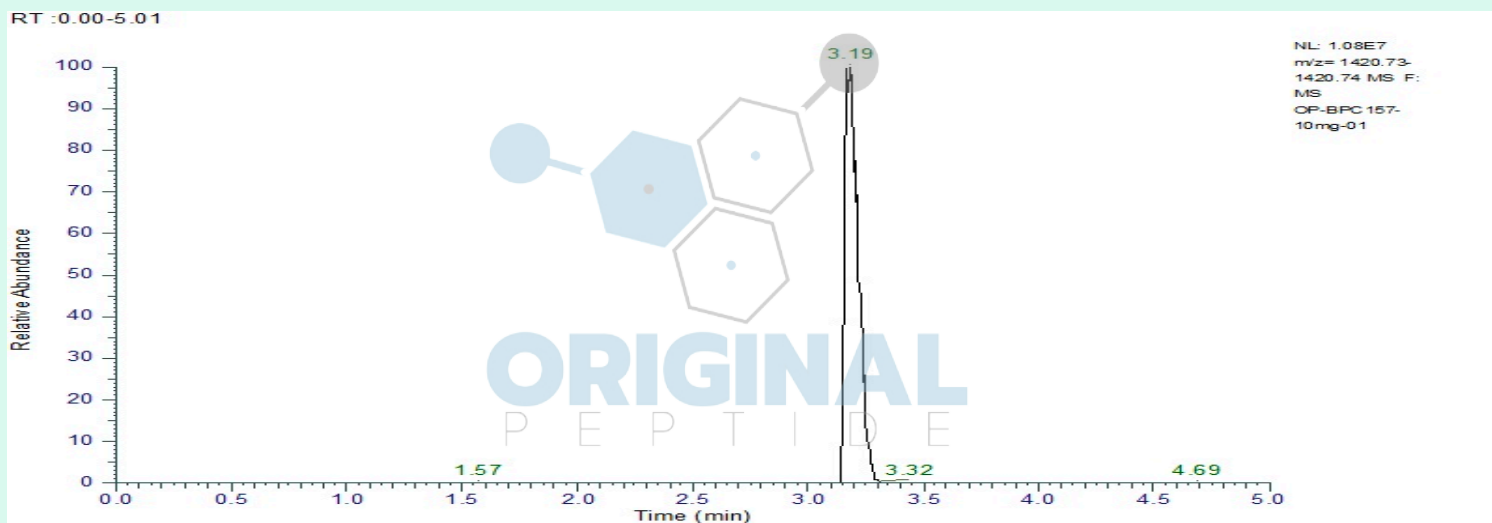
Method: Qualitative and Quantitative chemical analysis by Ultra High Performance Liquid Chromatography with Mass Spectrometry

Pubchem CID: 9941957

[BPC 157](#) | [C62H98N16O22](#) | [CID 9941957](#) - PubChem

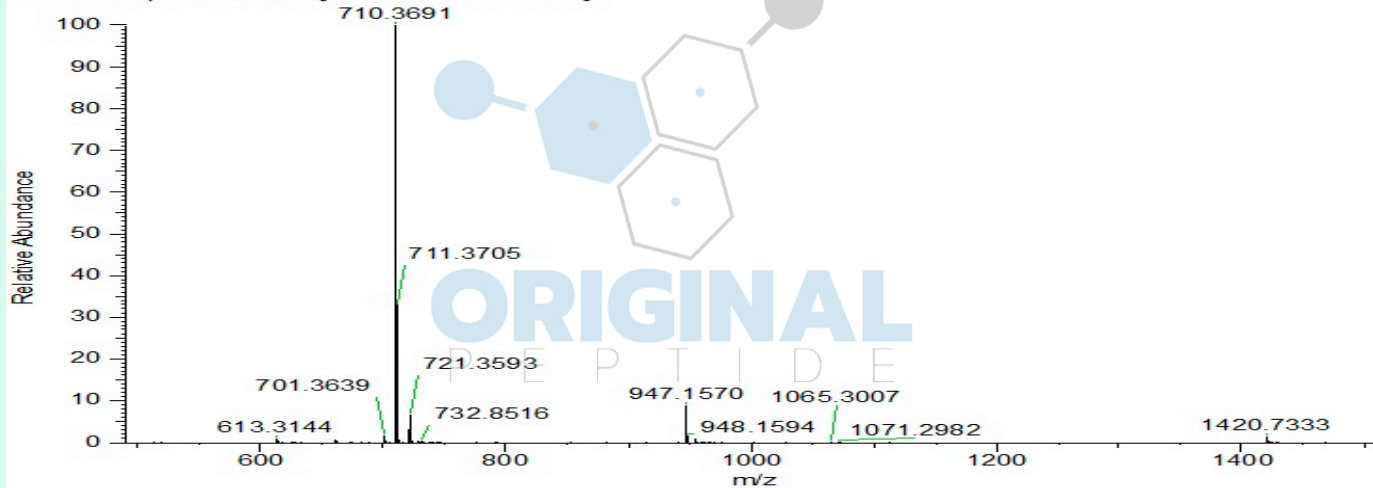
	Specification	Result	
Identity Test:	BPC 157	BPC 157	Conforms
Purity:	>99%	99.64%	Conforms

LC-MS Chromatogram: Retention Time and Peak Analysis



Full Scan Mass Spectrometry Analysis

OP-BPC157-10mg-01 #669 RT: 3.18 AV: 1 NL: 8.16E8
T: FTMS + p ESI Full ms [500.0000-1500.0000]



Analysis Performed by

Victor Ugur
Analytical Chemist
contact@bioregen.com

COA #11793

Security Key **ORIGINALPEPTIDE0**
bioregen.com/verify



Victor Ugur