

Client: Original Peptide
info@originalpeptide.com
www.originalpeptide.com

Sample received: **12/23/25**
Analysis conducted: **01/07/26**

Compound:	KLOW Blend	CAS:	137525-51-0
Batch/Lot #:	T2505-008	Formula:	C62H98N16O22
Appearance:	Blue lyophilized powder	Mol Wt:	1419.5 g/mol

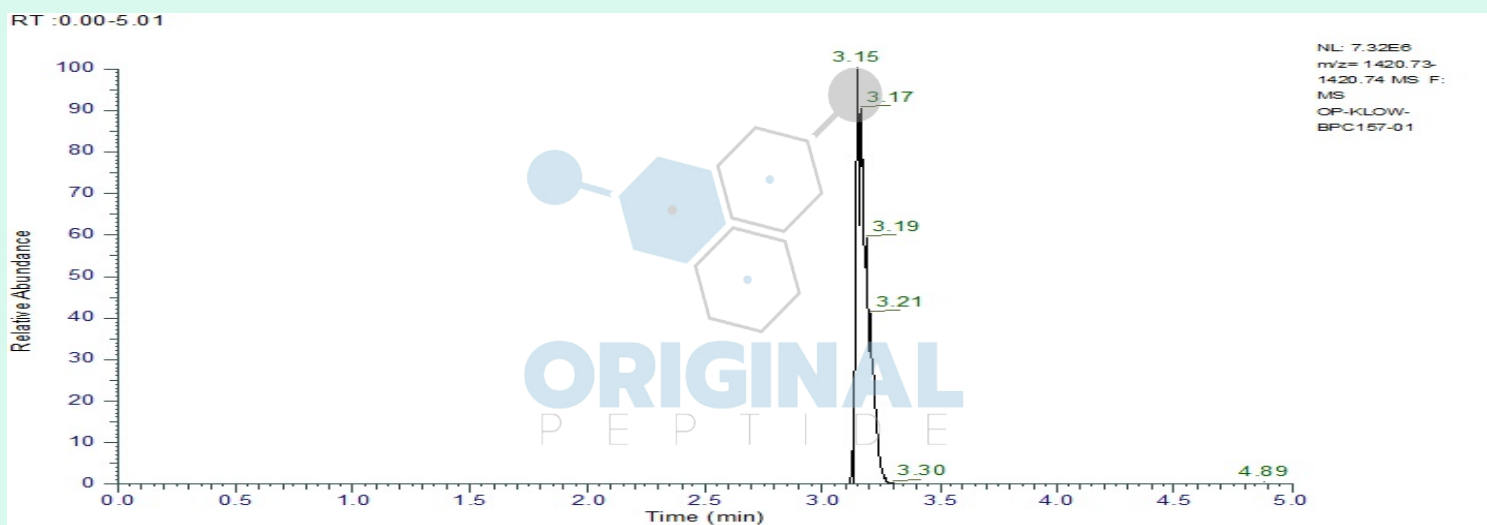
Method: Qualitative and Quantitative chemical analysis by Ultra High Performance Liquid Chromatography with Mass Spectrometry

Pubchem CID: 9941957

[BPC 157](#) | [C62H98N16O22](#) | [CID 9941957 - PubChem](#)

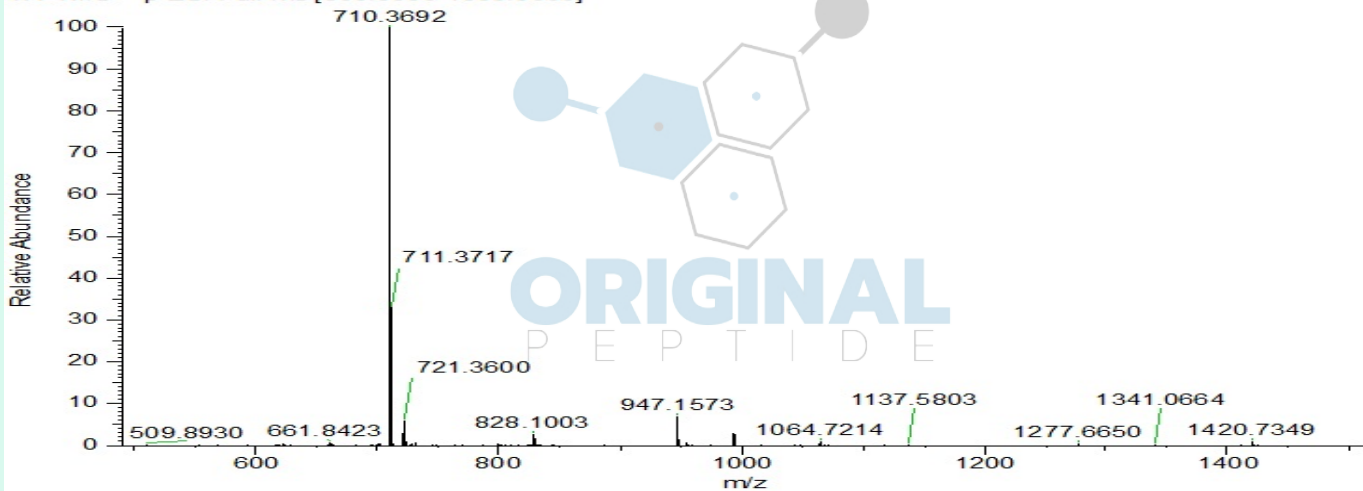
	Specification	Result	
Identity Test:	BPC 157	BPC 157	Conforms
Purity:	>99%	99.69%	Conforms

LC-MS Chromatogram: Retention Time and Peak Analysis



Full Scan Mass Spectrometry Analysis

OP-KLOW-BPC157-01 #671 RT: 3.16 AV: 1 NL: 5.97E8
T: FTMS + p ESI Full ms [500.0000-1500.0000]



Analysis Performed by

Victor Ugur
Analytical Chemist
contact@bioregen.com

COA #11792
Security Key **ORIGINALPEPTIDE0**
bioregen.com/verify



Victor Ugur

Client: Original Peptide
info@originalpeptide.com
www.originalpeptide.com

Sample received: **12/23/25**
Analysis conducted: **01/07/26**

Compound:	KLOW Blend	CAS:	885340-08-9
Batch/Lot #:	T2505-008	Formula:	C38H68N10O14
Appearance:	Blue lyophilized powder	Mol Wt:	889.0 g/mol

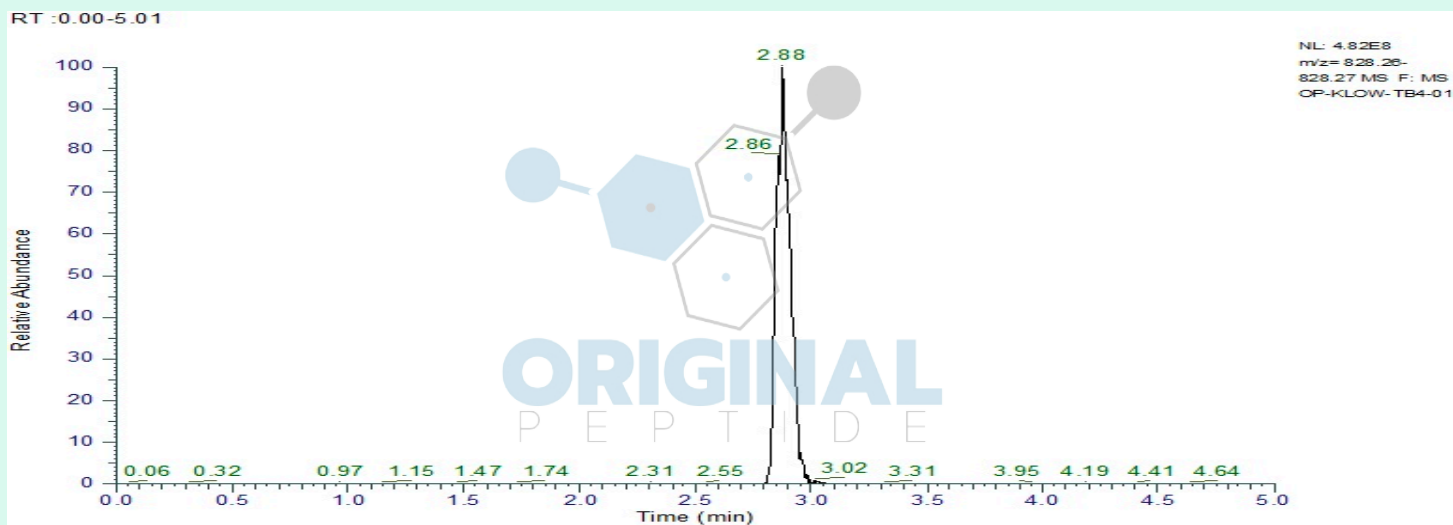
Method: Qualitative and Quantitative chemical analysis by Ultra High Performance Liquid Chromatography with Mass Spectrometry

Pubchem CID: 62707662

TB 500|C38H68N10O14 | CID 62707662 - PubChem

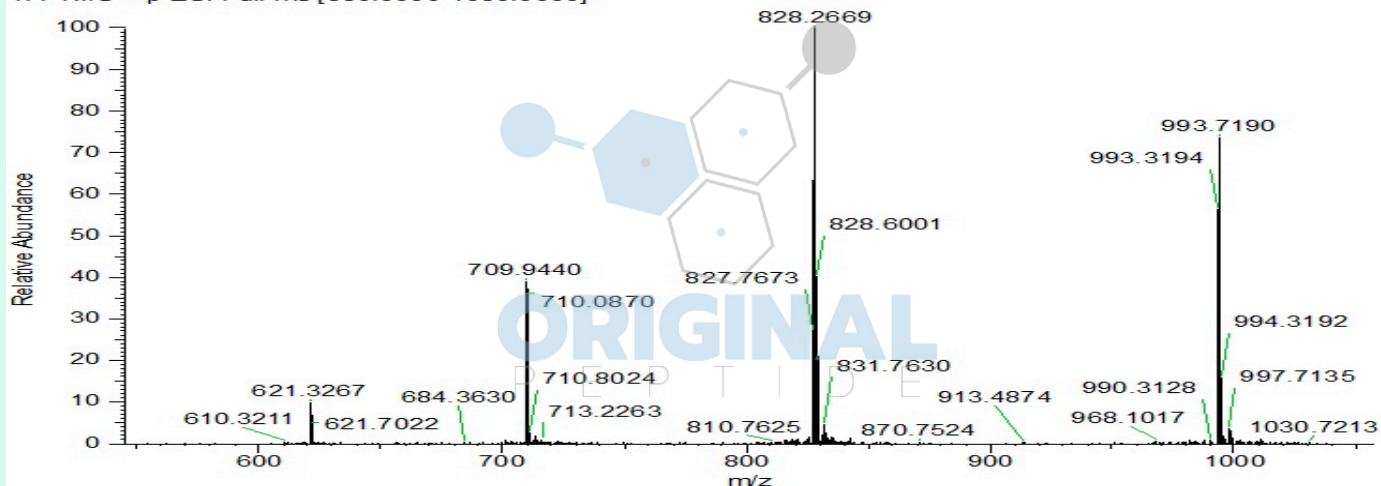
	Specification	Result	
Identity Test:	TB500	TB4	Conforms
Purity:	>99%	99.42%	Conforms

LC-MS Chromatogram: Retention Time and Peak Analysis



Full Scan Mass Spectrometry Analysis

OP-KLOW-TB4-01 #613 RT: 2.88 AV: 1 NL: 4.56E8
T: FTMS + p ESI Full ms [550.0000-1050.0000]



Analysis Performed by

Victor Ugur
Analytical Chemist
contact@bioregen.com

COA #11792
Security Key **ORIGINALPEPTIDE0**
bioregen.com/verify



Victor Ugur

Client: Original Peptide
info@originalpeptide.com
www.originalpeptide.com

Sample received: **12/23/25**
Analysis conducted: **01/07/26**

Compound:	KLOW Blend	CAS:	49557-75-7
Batch/Lot #:	T2505-008	Formula:	C14H24N6O4
Appearance:	Blue lyophilized powder	Mol Wt:	340.38 g/mol

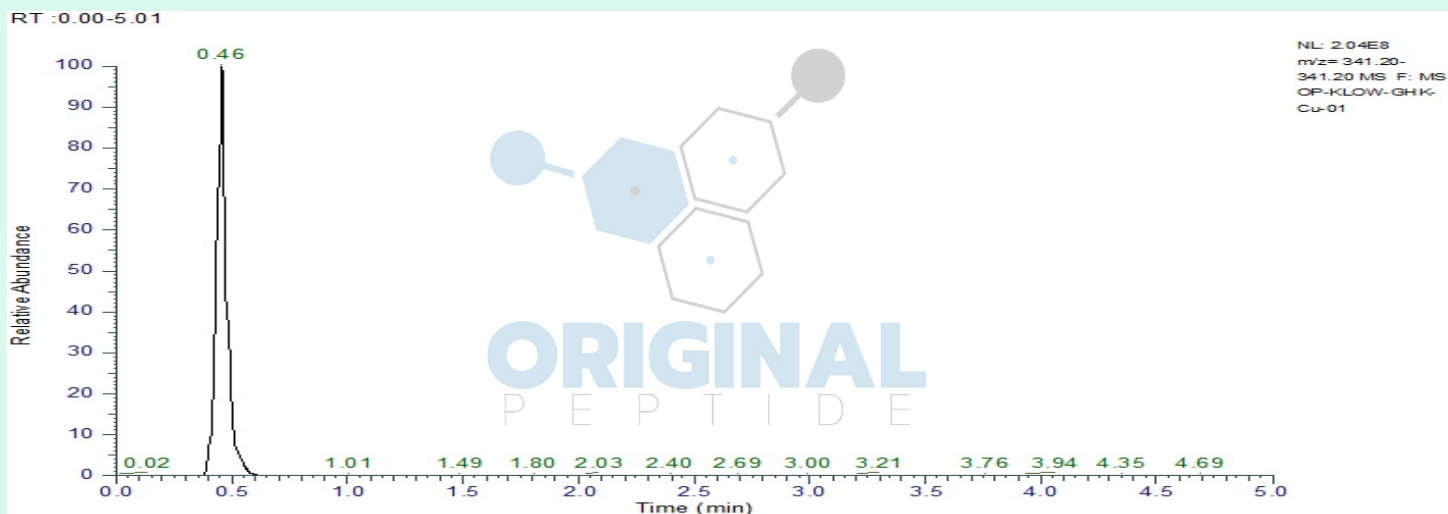
Method: Qualitative and Quantitative chemical analysis by Ultra High Performance Liquid Chromatography with Mass Spectrometry

Pubchem CID: 342538

[GHK-Cu](#) | [C14H24N6O4Cu](#) | [CID 342538](#)

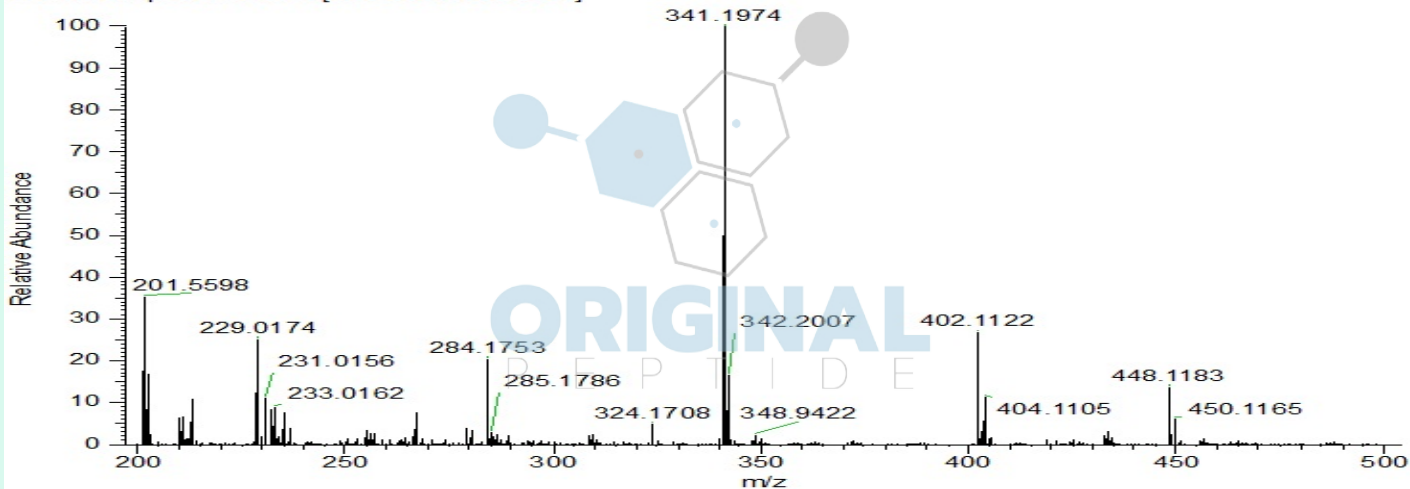
	Specification	Result	
Identity Test:	GHK-Cu	GHK-Cu	Conforms
Purity:	>99%	99.87%	Conforms

LC-MS Chromatogram: Retention Time and Peak Analysis



Full Scan Mass Spectrometry Analysis

OP-KLOW-GHK-Cu-01 #102 RT: 0.44 AV: 1 NL: 1.31E8
T: FTMS + p ESI Full ms [200.0000-500.0000]



Analysis Performed by

Victor Ugur
Analytical Chemist
contact@bioregen.com

COA #11792
Security Key **ORIGINALPEPTIDE0**
bioregen.com/verify



Victor Ugur

Client: **Original Peptide**
 info@originalpeptide.com
 www.originalpeptide.com

Sample received: **12/23/25**
 Analysis conducted: **01/07/26**

Compound:	KLOW Blend	CAS:	67727-97-3
Batch/Lot #:	T2505-008	Formula:	C16H30N4O4
Appearance:	Blue lyophilized powder	Mol Wt:	342.43 g/mol

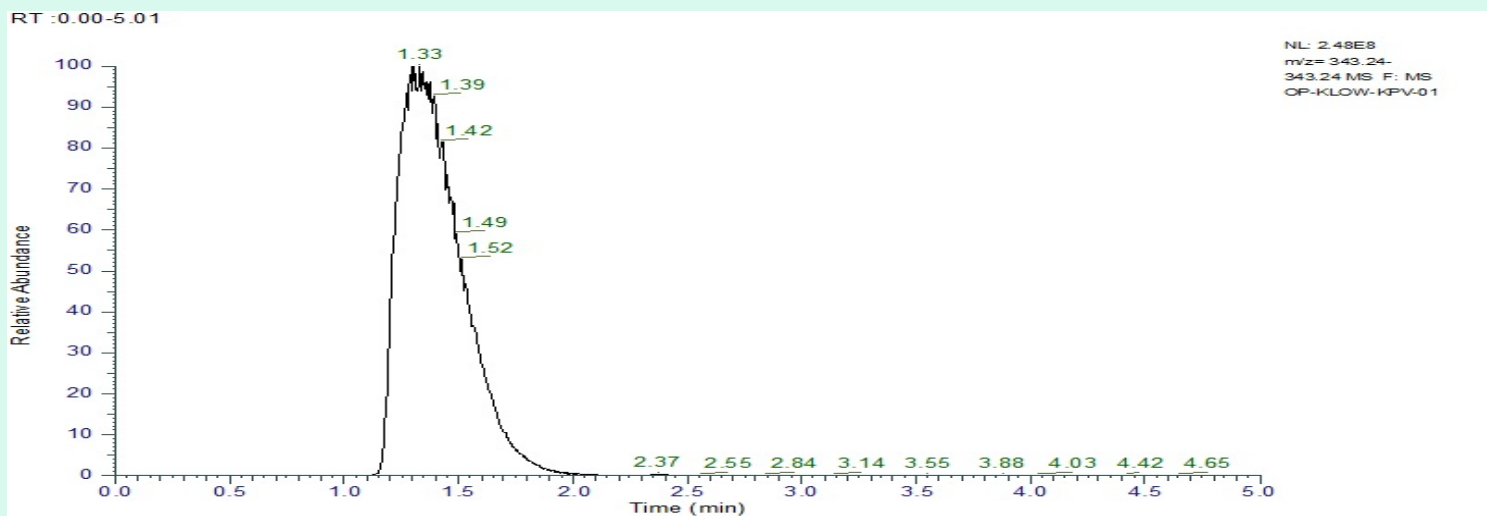
Method: Qualitative and Quantitative chemical analysis by Ultra High Performance Liquid Chromatography with Mass Spectrometry

Pubchem CID: 125672

KPV | C16H30N4O4 | CID 125672

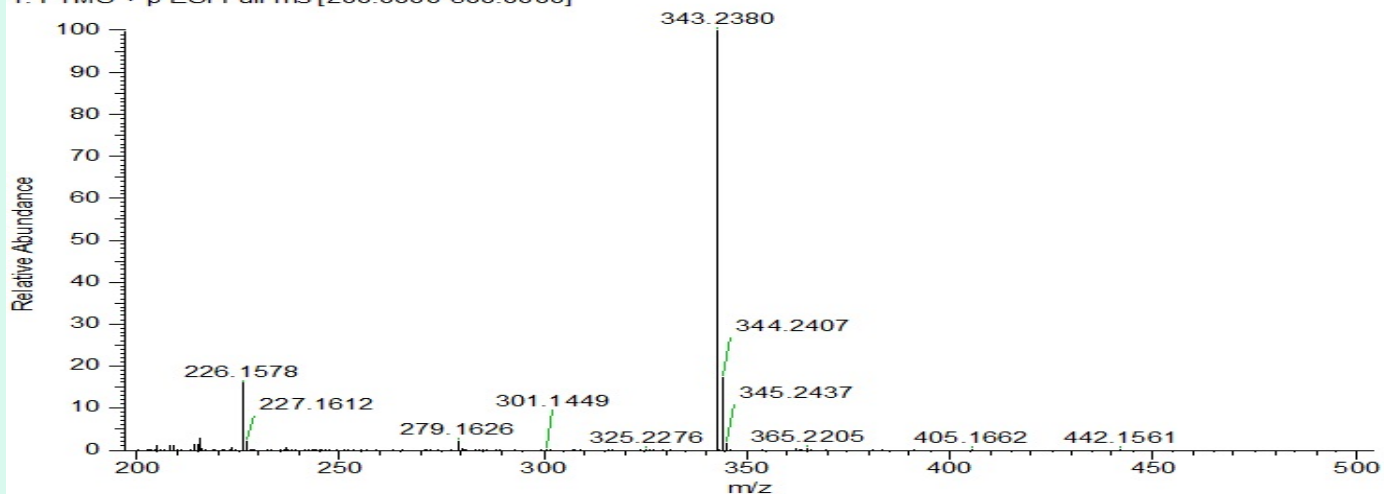
	Specification	Result	
Identity Test:	KPV	KPV	Conforms
Purity:	>99%	99.54%	Conforms

LC-MS Chromatogram: Retention Time and Peak Analysis



Full Scan Mass Spectrometry Analysis

OP-KLOW-KPV-01 #304 RT: 1.32 AV: 1 NL: 2.29E8
T: FTMS + p ESI Full ms [200.0000-500.0000]



Analysis Performed by

Victor Ugur
Analytical Chemist
contact@bioregen.com

COA #11792
Security Key **ORIGINALPEPTIDE0**
bioregen.com/verify



Victor Ugur