

**Client: Original Peptide**  
info@originalpeptide.com  
www.originalpeptide.com

Sample received: **12/23/25**  
Analysis conducted: **01/06/26**

Compound:	GHK-Cu (50 mg)	CAS:	89030-95-5
Batch/Lot #:	T2503-021	Formula:	C14H23CuN6O4
Appearance:	Blue lyophilized powder	Mol Wt:	340.384 g/mol

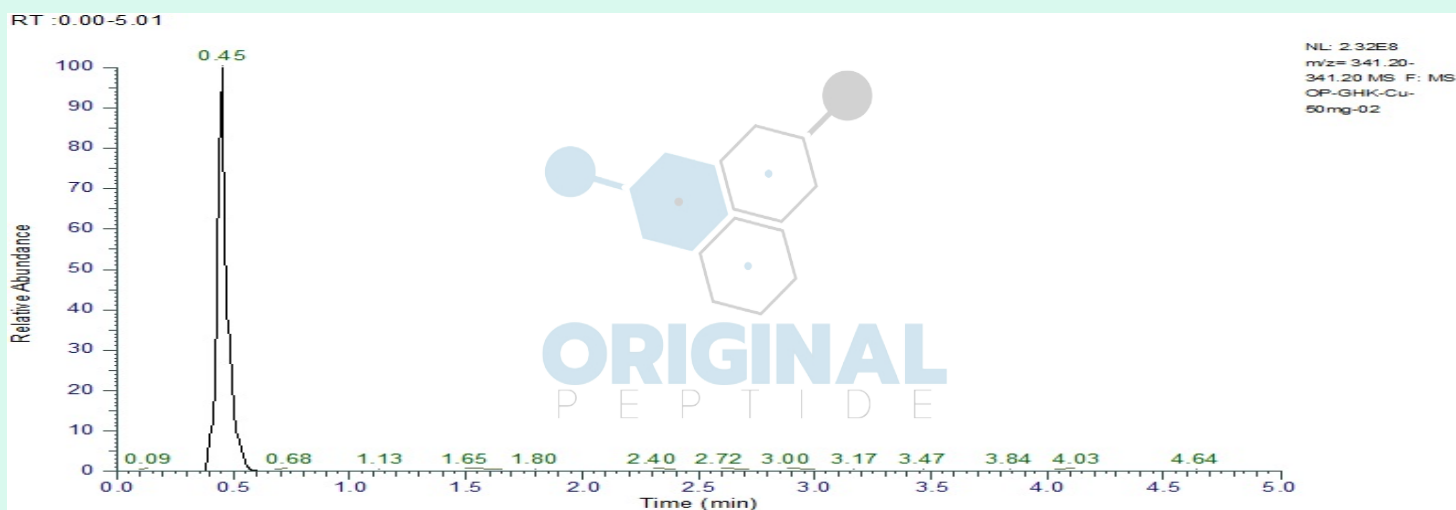
**Method:** Qualitative and Quantitative chemical analysis by Ultra High Performance Liquid Chromatography with Mass Spectrometry

**Pubchem CID:** 378611

GHK-Cu |C14H23CuN6O4 |378611

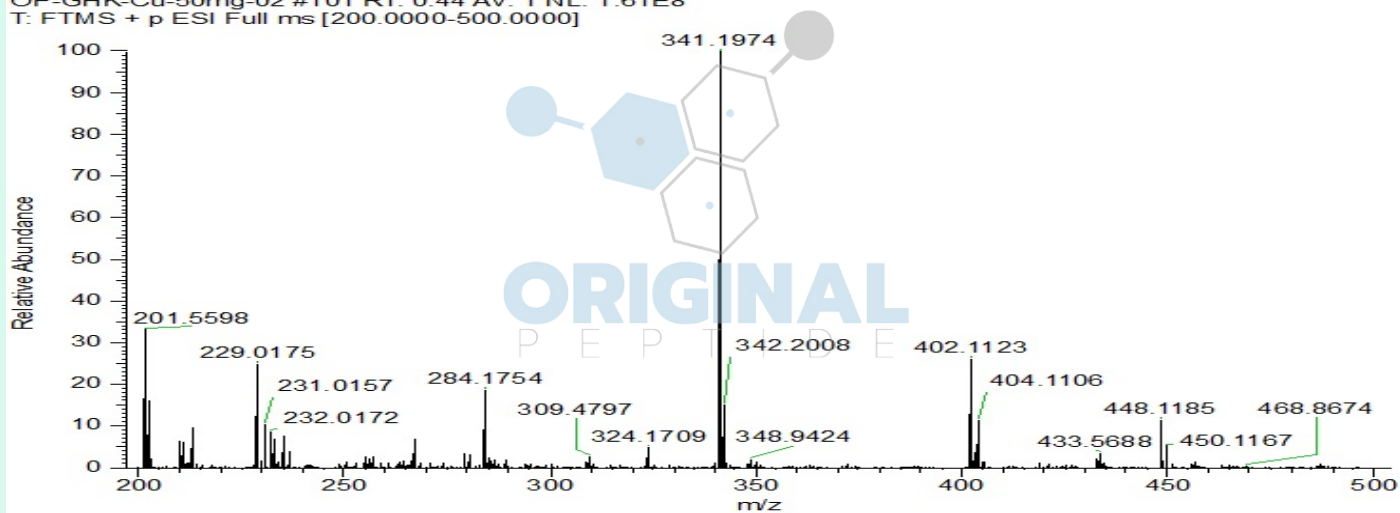
	Specification	Result	
Identity Test:	GHK-Cu	<b>GHK-Cu</b>	<b>Conforms</b>
Purity:	>99%	<b>99.65%</b>	<b>Conforms</b>

### LC-MS Chromatogram: Retention Time and Peak Analysis



# Full Scan Mass Spectrometry Analysis

OP-GHK-Cu-50mg-02 #101 RT: 0.44 AV: 1 NL: 1.61E8  
T: FTMS + p ESI Full ms [200.0000-500.0000]



## Analysis Performed by

Victor Ugur  
Analytical Chemist  
contact@bioregen.com

COA #11771  
Security Key **ORIGINALPEPTIDE0**  
bioregen.com/verify



*Victor Ugur*