

Client: Original Peptide
info@originalpeptide.com
www.originalpeptide.com

Sample received: **12/23/25**
Analysis conducted: **01/06/26**

Compound:	SS-31 (10mg)	CAS:	736992-21-5
Batch/Lot #:	T2503-001	Formula:	C32H49N9O5
Appearance:	White lyophilized powder	Mol Wt:	639.8 g/mol

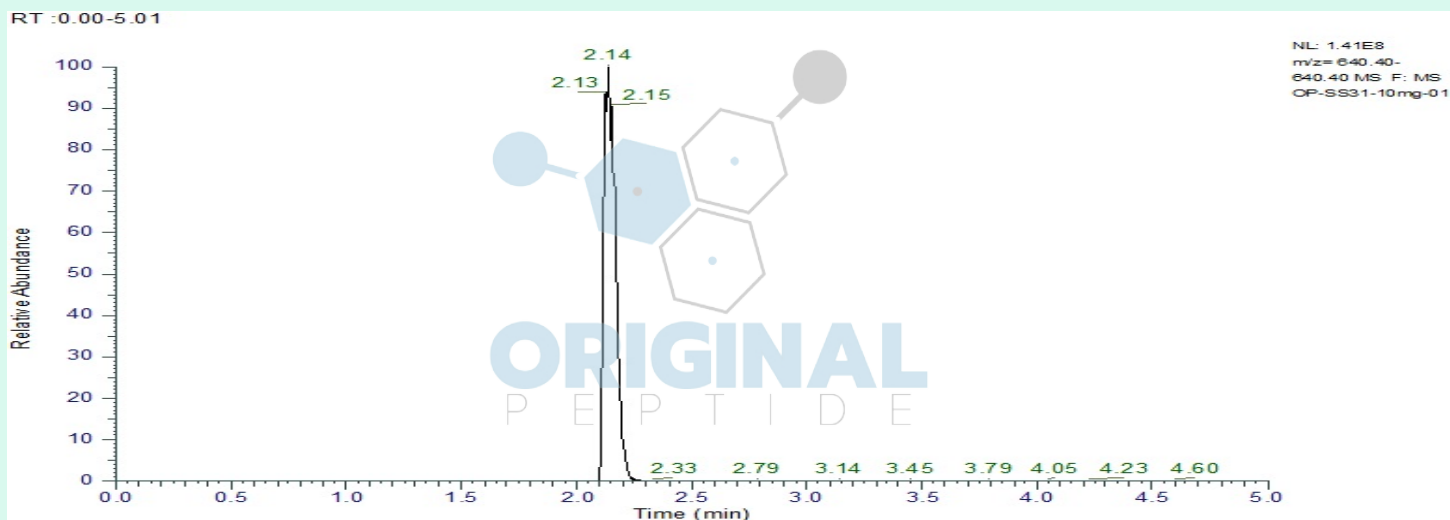
Method: Qualitative and Quantitative chemical analysis by Ultra High Performance Liquid Chromatography with Mass Spectrometry

Pubchem CID: 11764719

SS-31 | C32H49N9O5 | 11764719

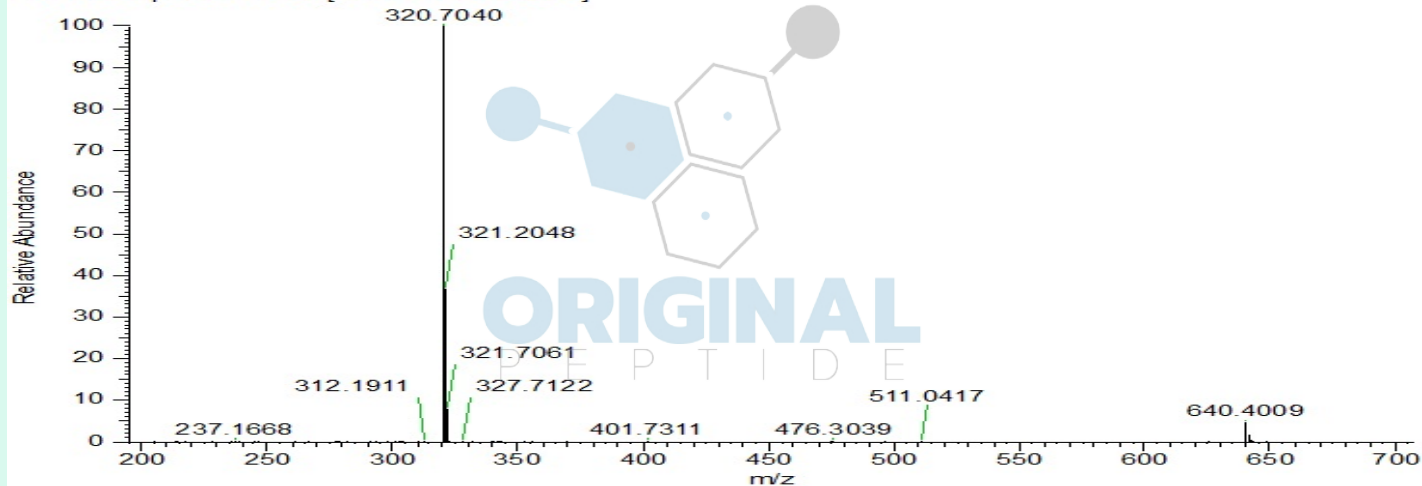
	Specification	Result	
Identity Test:	SS-31	SS-31	Conforms
Purity:	>99%	99.73%	Conforms

LC-MS Chromatogram: Retention Time and Peak Analysis



Full Scan Mass Spectrometry Analysis

OP-SS31-10mg-01 #488 RT: 2.13 AV: 1 NL: 3.03E9
T: FTMS + p ESI Full ms [200.0000-700.0000]



Analysis Performed by

Victor Ugur
Analytical Chemist
contact@bioregen.com

COA #11767
Security Key **ORIGINALPEPTIDE0**
bioregen.com/verify



Victor Ugur