

Client: Original Peptide
info@originalpeptide.com
www.originalpeptide.com

Sample received: **12/03/25**
Analysis conducted: **01/07/26**

Compound:	Retatrutide (30mg)	CAS:	2381089-83-2
Batch/Lot #:	S2503-019	Formula:	C221H342N46O68
Appearance:	White lyophilized powder	Mol Wt:	4845.444 g/mol

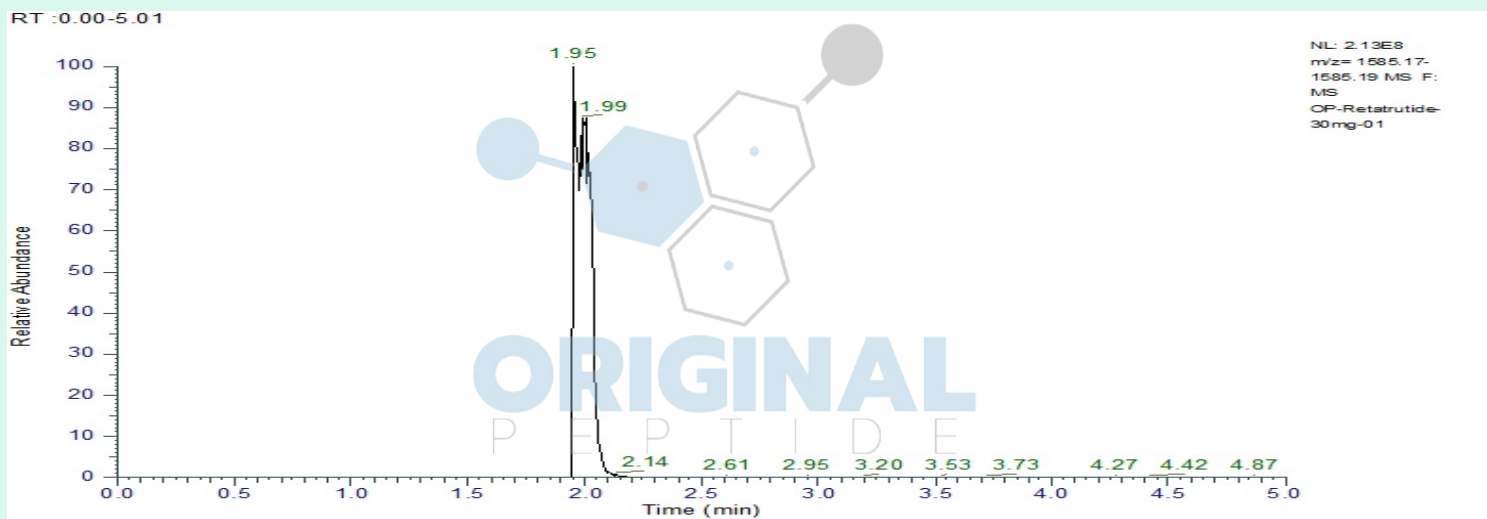
Method: Qualitative and Quantitative chemical analysis by Ultra High Performance Liquid Chromatography with Mass Spectrometry

Pubchem CID: 171390338

Retatrutide |C221H342N46O68 |171390338

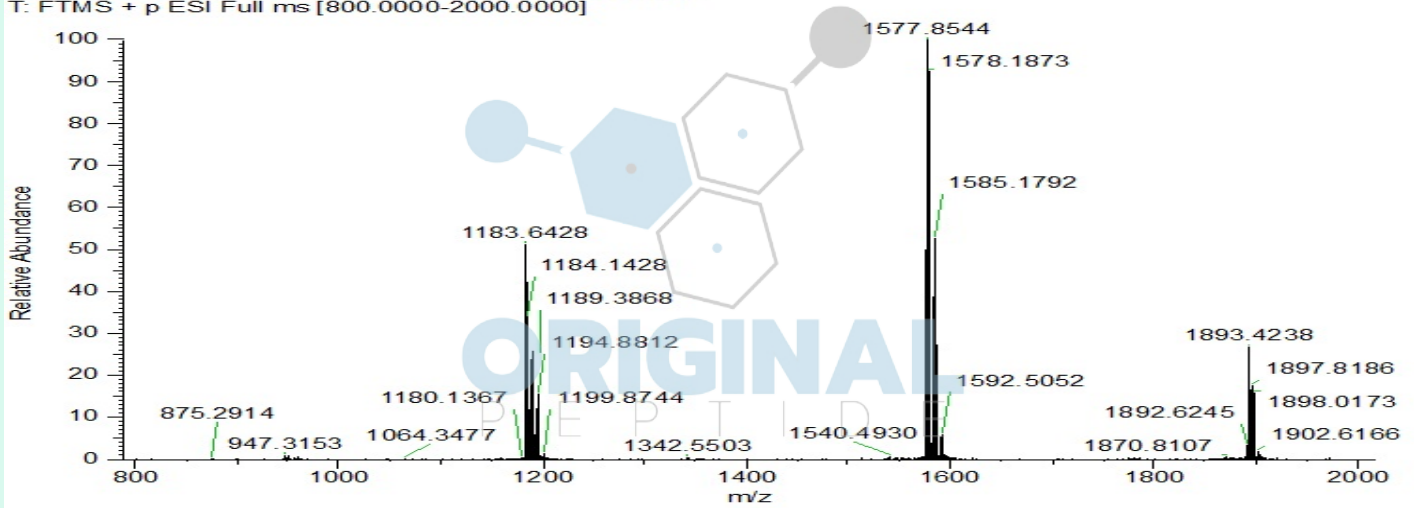
	Specification	Result	
Identity Test:	Retatrutide	Retatrutide	Conforms
Purity:	>99%	99.69%	Conforms

LC-MS Chromatogram: Retention Time and Peak Analysis



Full Scan Mass Spectrometry Analysis

OP-Retatrutide-30mg-01 #414 RT: 1.97 AV: 1 NL: 2.97E8
T: FTMS + p ESI Full ms [800.0000-2000.0000]



Analysis Performed by

Victor Ugur
Analytical Chemist
contact@bioregen.com

COA #11804
Security Key **ORIGINALPEPTIDE0**
bioregen.com/verify



Victor Ugur