

**Client: Original Peptide**  
info@originalpeptide.com  
www.originalpeptide.com

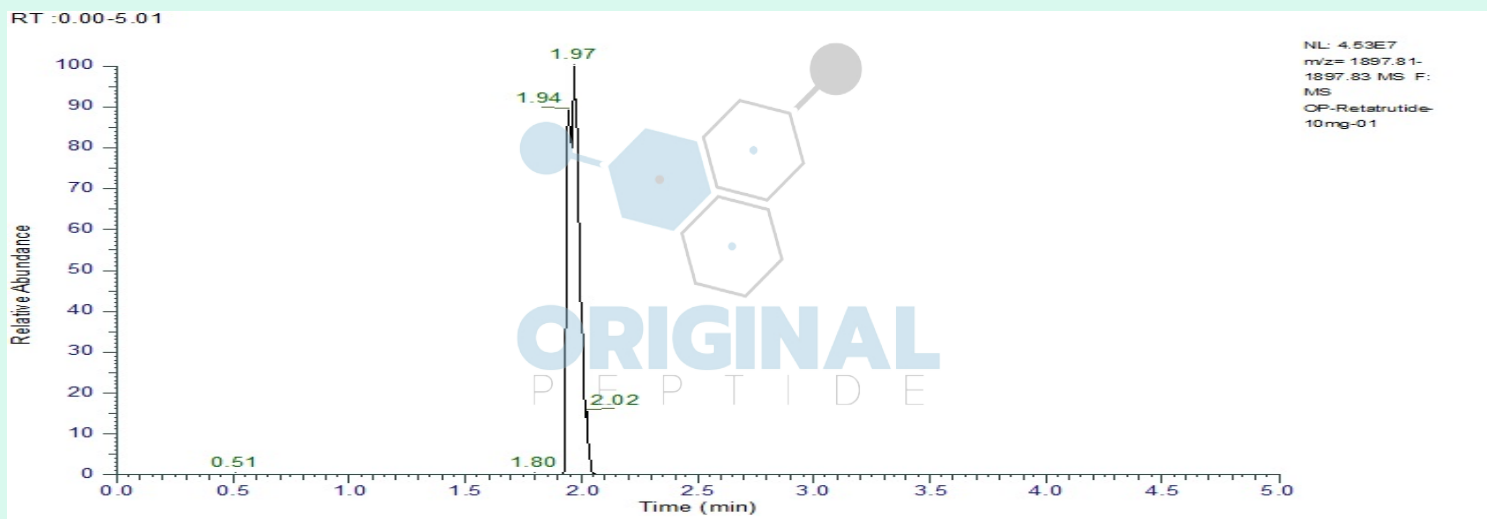
Sample received: **12/23/25**  
Analysis conducted: **01/07/26**

Compound:	Retatrutide (10mg)	CAS:	2381089-83-2
Batch/Lot #:		Formula:	C221H342N46O68
Appearance:	White lyophilized powder	Mol Wt:	4845.444 g/mol

**Method:** Qualitative and Quantitative chemical analysis by Ultra High Performance Liquid Chromatography with Mass Spectrometry  
**Pubchem CID:** 171390338  
Retatrutide |C221H342N46O68 |171390338

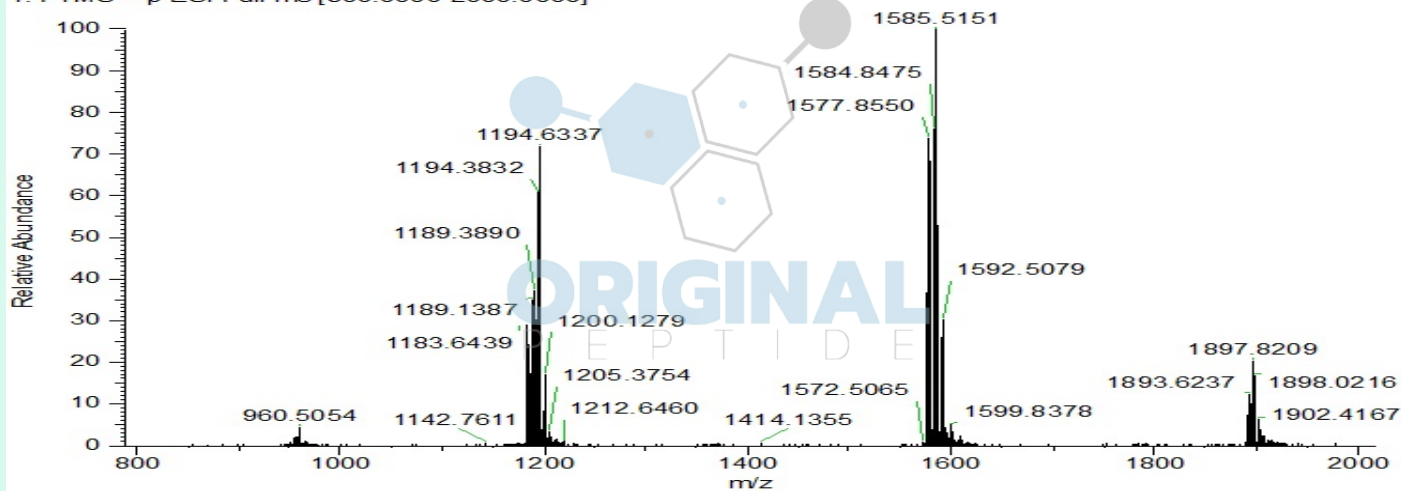
	Specification	Result	
Identity Test:	Retatrutide	<b>Retatrutide</b>	<b>Conforms</b>
Purity:	>99%	<b>99.54%</b>	<b>Conforms</b>

### LC-MS Chromatogram: Retention Time and Peak Analysis



# Full Scan Mass Spectrometry Analysis

OP-Retatrutide-10mg-01 #414 RT: 1.94 AV: 1 NL: 2.01E8  
T: FTMS + p ESI Full ms [800.0000-2000.0000]



## Analysis Performed by

Victor Ugur  
Analytical Chemist  
contact@bioregen.com

COA #11805  
Security Key **ORIGINALPEPTIDE0**  
bioregen.com/verify



*Victor Ugur*