

Client: **Original Peptide**
 info@originalpeptide.com
 www.originalpeptide.com

Sample received: **12/23/25**
 Analysis conducted: **01/06/26**

Compound:	PT-141 (10mg)	CAS:	189691-06-3
Batch/Lot #:	S2502-017	Formula:	C50H68N14O10
Appearance:	White lyophilized powder	Mol Wt:	1025.182 g/mol

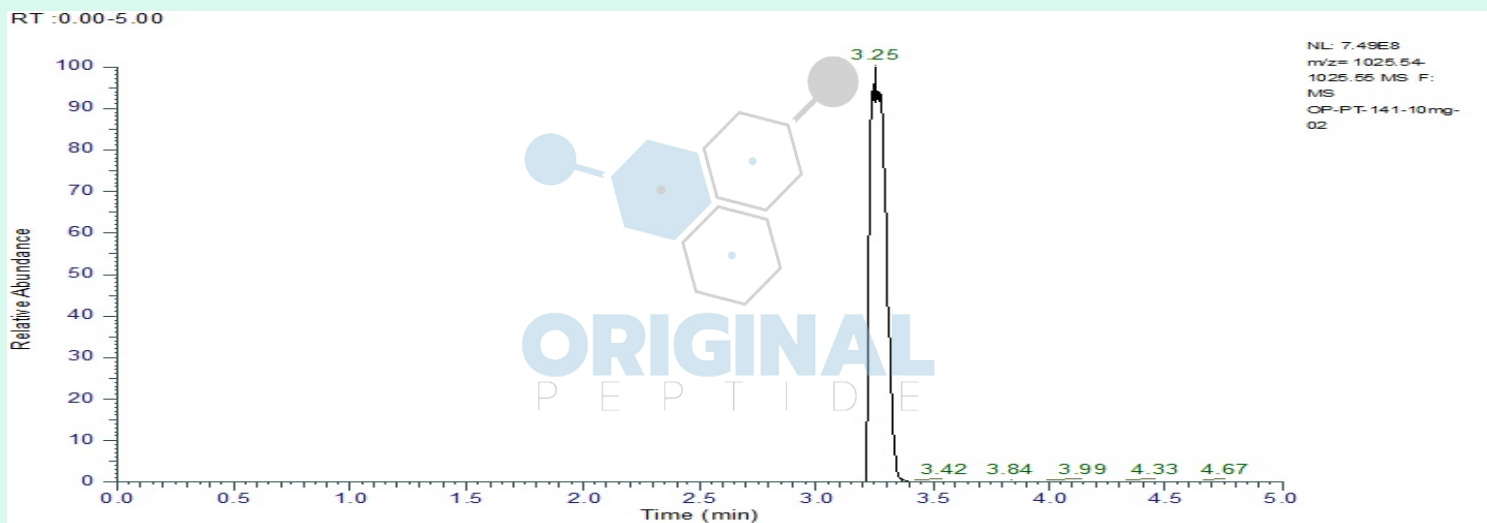
Method: Qualitative and Quantitative chemical analysis by Ultra High Performance Liquid Chromatography with Mass Spectrometry

Pubchem CID: 9941379

[PT-141|C50H68N14O10 |9941379](#)

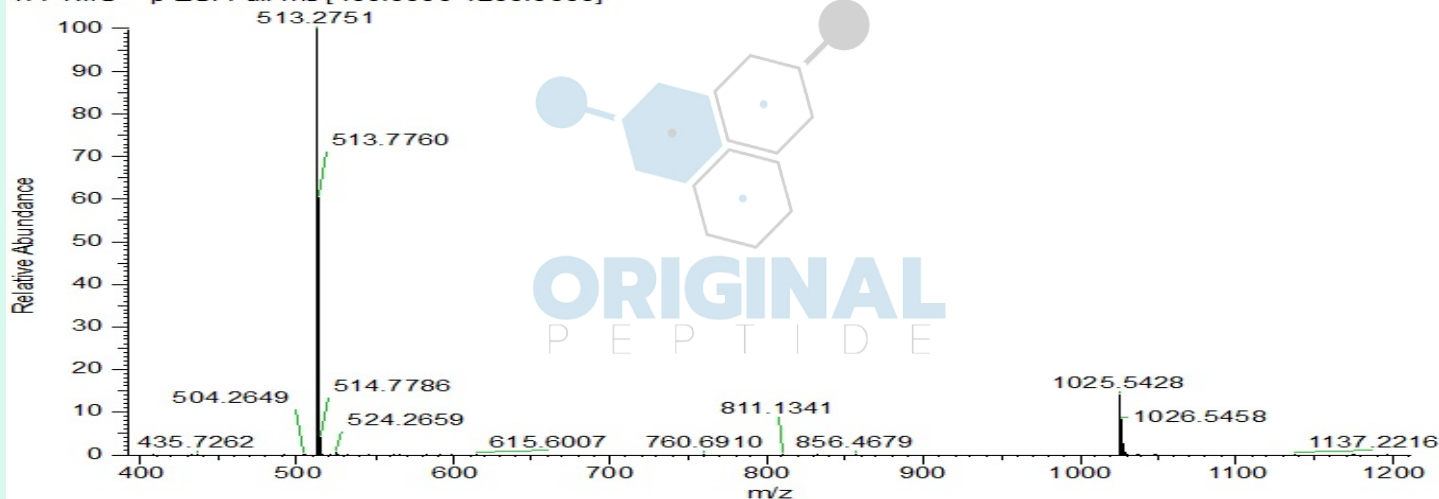
	Specification	Result	
Identity Test:	PT-141	PT-141	Conforms
Purity:	>99%	99.42%	Conforms

LC-MS Chromatogram: Retention Time and Peak Analysis



Full Scan Mass Spectrometry Analysis

OP-PT-141-10mg-02 #694 RT: 3.24 AV: 1 NL: 5.05E9
T: FTMS + p ESI Full ms [400.0000-1200.0000]



Analysis Performed by

Victor Ugur
Analytical Chemist
contact@bioregen.com

COA #11770
Security Key **ORIGINALPEPTIDE0**
bioregen.com/verify

